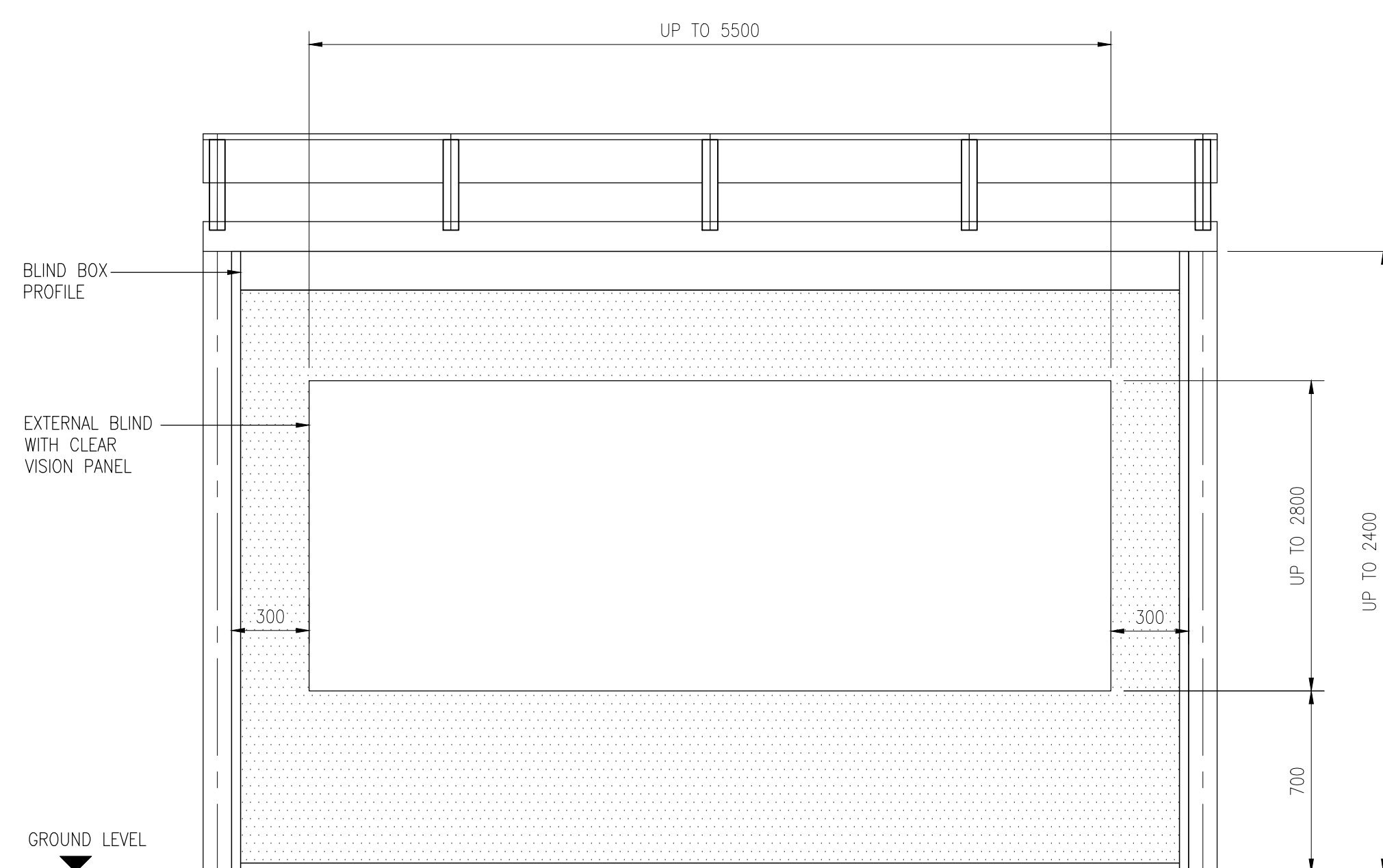


NOTES:

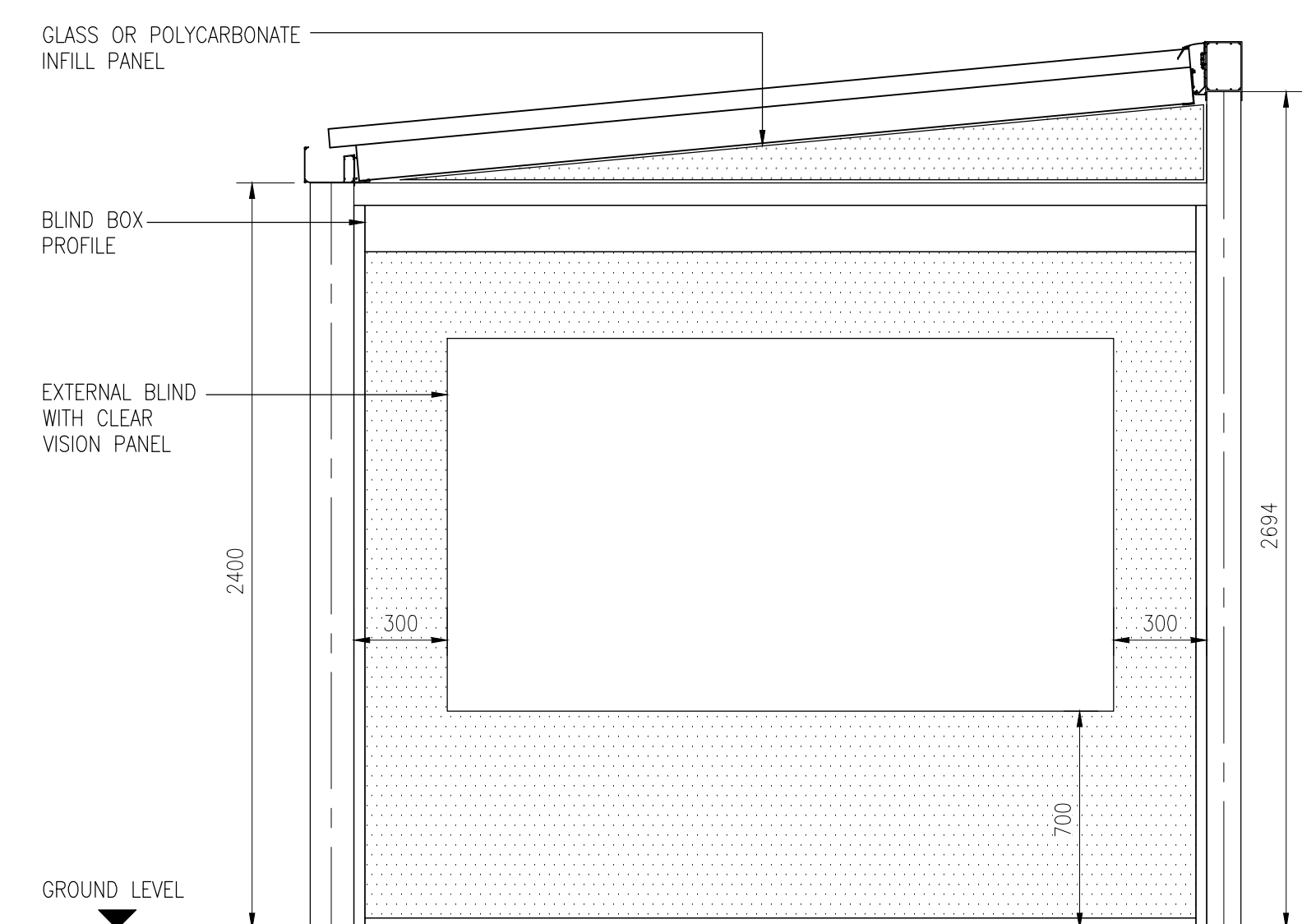
1. MATERIALS: ALUMINIUM FRAME ANY RAL (TO MATCH CANOPY FRAME) WITH SERGE FERRARI SOLTIS OUTDOOR FABRIC WITH CLEAR VISION PANEL
2. OPERATION: CRANK OPERATION (SELECTED SIZES ONLY) OR MOTORISED OPERATION (OBSTACLE DETECTION MOTOR INCLUDED) WITH REMOTE CONTROL OR WALL SWITCH
3. DIMENSIONS: MAXIMUM 5500mm WIDTH X 2800mm HEIGHT
BLINDS ARE MADE BESPOKE WITHIN THESE SIZES TO FIT BETWEEN POSTS

PLEASE CONTACT US WITH ANY TECHNICAL QUERIES:
TEL: 0117 958 9933
EMAIL: sales@kensingtonsystems.co.uk
WEB: www.kensingtonsystems.co.uk



FRONT ELEVATION

SCALE: 1:20



END ELEVATION

SCALE: 1:20

REV	DATE	DESCRIPTION
-----	------	-------------

Client
-

Project
SAMPLE CANOPY ADDITIONS

Title
CANOPY EXTERNAL BLIND PANEL ELEVATIONS

Kensington Systems Ltd, Capital House, 17 Alexandra Park, Fishponds, Bristol, BS16 2BG, United Kingdom
Tel: +44 (0)117 958 9933 Web: www.kensingtonsystems.co.uk

Date	FEB 2023	Drawn by	CATSCAD
------	----------	----------	---------

Scale	AS SHOWN @ A1	Checked by	G.H.
-------	---------------	------------	------

Drawing No	CANOPY/000	Rev	-
------------	-------------------	-----	---