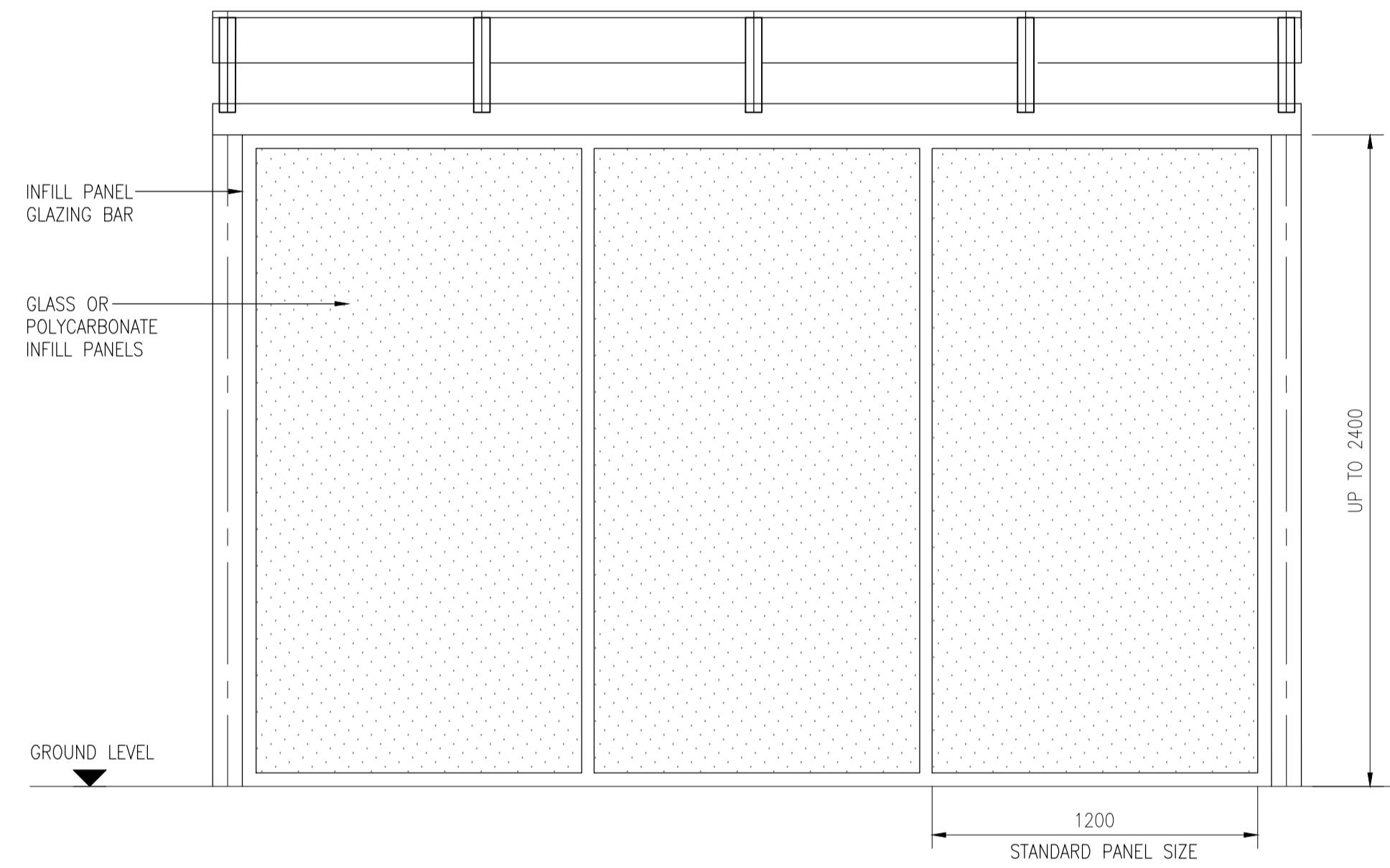


NOTES:

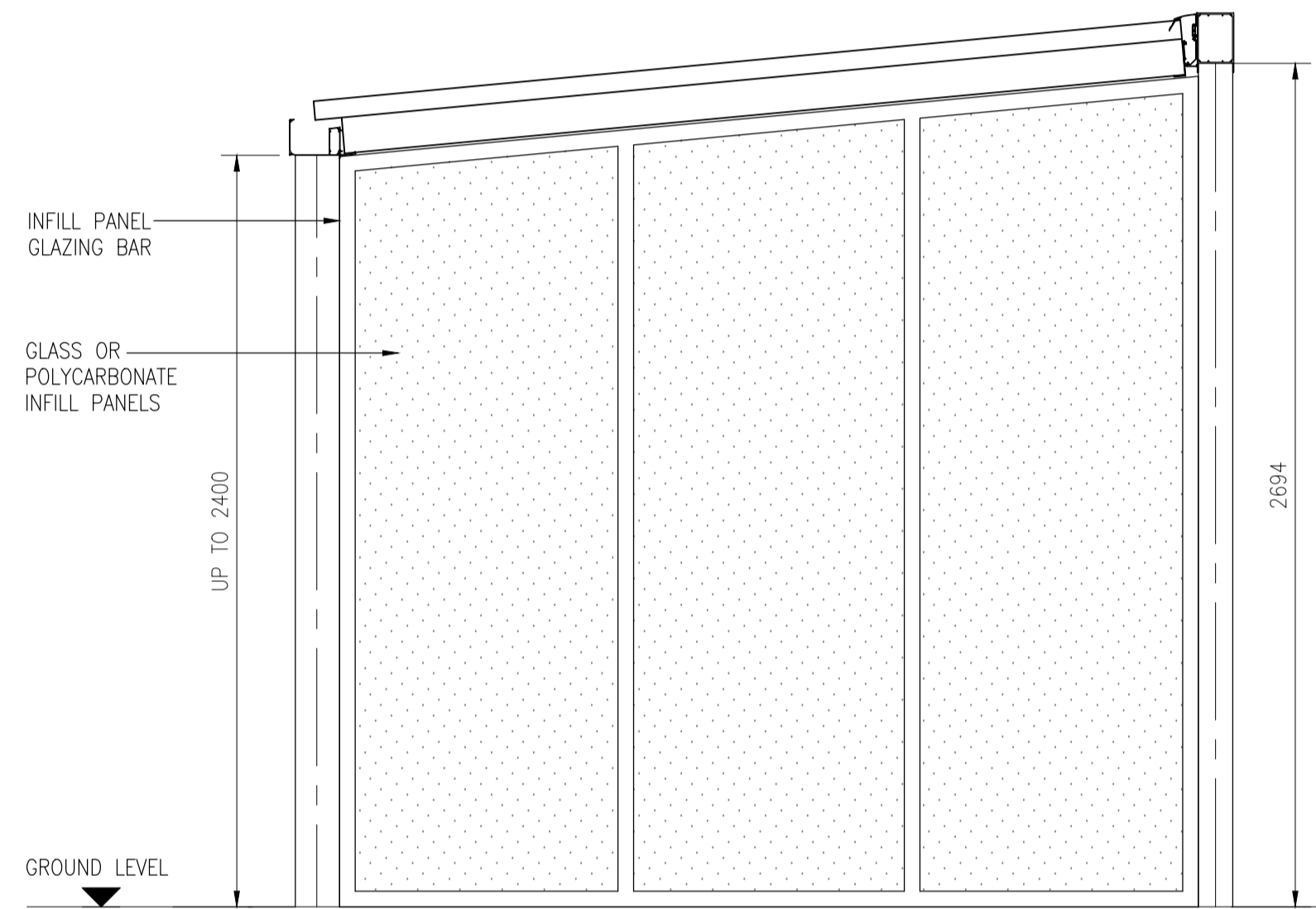
1. MATERIALS: ALUMINIUM GLAZING BARS ANY RAL (TO MATCH CANOPY FRAME)
2. INFILL: 10mm TOUGHENED GLASS, OR 32mm MULTIWALL POLYCARBONATE
3. STANDARD PANEL WIDTH IS 1200mm BUT THIS CAN VARY DEPENDING ON SIZE OF PANEL

PLEASE CONTACT US WITH ANY TECHNICAL QUERIES:  
 TEL: 0117 958 9933  
 EMAIL: sales@kensingtonsystems.co.uk  
 WEB: www.kensingtonsystems.co.uk



**FRONT ELEVATION**

SCALE: 1:20



**END ELEVATION**

SCALE: 1:20

REV	DATE	DESCRIPTION
Client		
-		
Project		
SAMPLE CANOPY ADDITIONS		
Title		
CANOPY INFILL PANEL ELEVATIONS		

**Kensington**  
 Shade and Shelter  
 Kensington Systems Ltd, Capital House, 17 Alexandra Park,  
 Fishponds, Bristol, BS16 2BG, United Kingdom  
 Tel: +44 (0)117 958 9933 Web: www.kensingtonsystems.co.uk

Date	FEB 2023	Drawn by	CATSCAD
Scale	AS SHOWN @ A1	Checked by	G.H.
Drawing No	CANOPY/000		Rev
			-