



BIM User Guide-v1

Kensington Systems BIM components

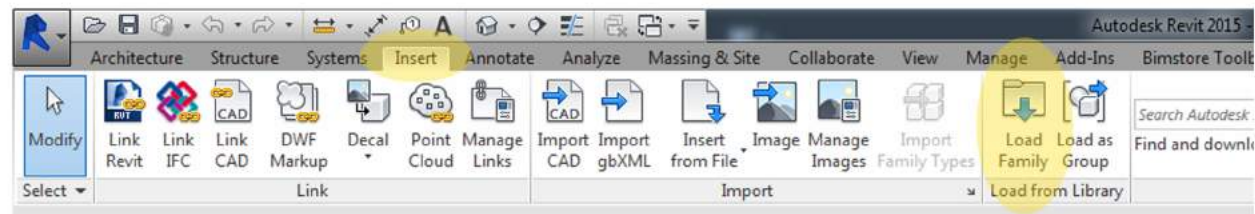
Thank you for downloading this Kensington Systems component. This user guide has been included to provide guidance on how to correctly use and make the most of the content. This document covers all of the types that are available from Kensington Systems.



Loading the Kensington Systems components into your project

These components have been created as 'Speciality Equipment' families with standard configurations pre-defined as 'types'. You can add the family into your project using the following method.

1. Save the component that you downloaded from bimstore to your desired location on your computer (In line with your company protocols).
2. Open the Revit file containing your 'project', and navigate to a an appropriate view.
3. To load the component into the project, go to the 'Insert' tab on the Revit Ribbon, select 'Load Family' and select the component from your saved location' as shown below:

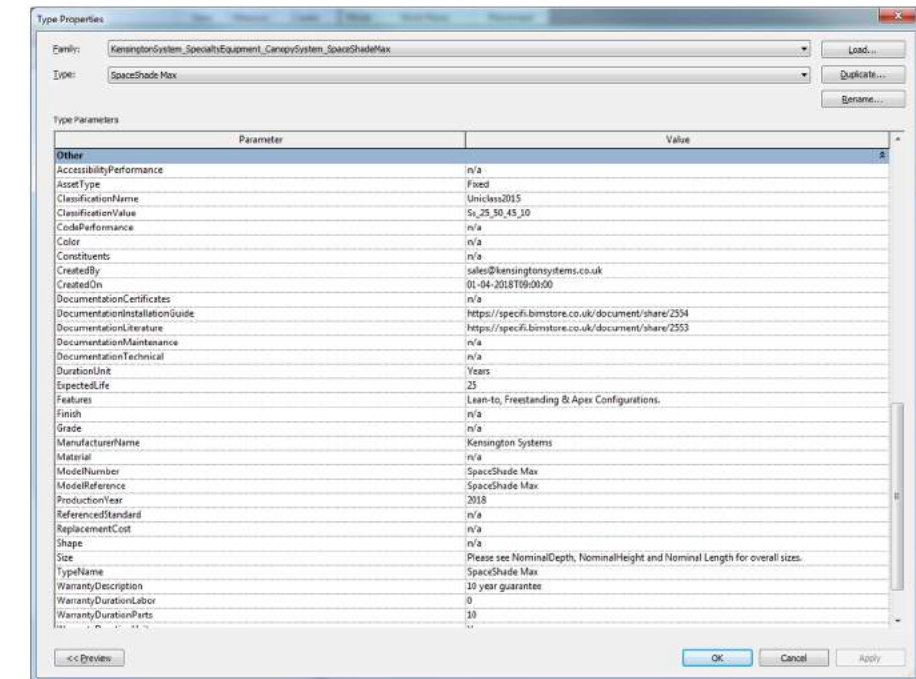


4. The Family is now copied & embedded into your project and can be selected from the 'Project Browser / Families / Speciality Equipment' selector within your project BIM. (You can delete the item you added to your 'Revit Model' and the Family will remain within your Project Browser.)

Manufacturer Specific Data

The Kensington Systems components contain a number of technical and manufacturer specific data to assist the user when creating their project and/or when scheduling the components. To access the data embedded into the components, simply select the component and click the 'Edit Type' button at the head of the 'Properties' tab. All of the information can be scheduled including URL links direct to the manufacturer's website and to the documentation links of the particular component.

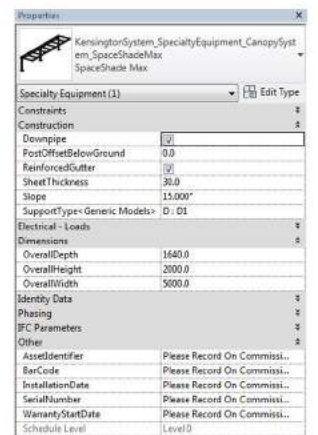
All of the content from Kensington Systems comes with COBie data included and the content is inline with the **bimstore** bible version 15, meaning it complies with all government requirements for BIM content.



Additional features

Kensington Systems components have been created as face based families this allows the user to simply attach the component to any surface. Ensure that you have the desired family selected and simply hover over the surface for the component to appear.

Under the heading 'Construction' are the parameters to adjust to appearance & schedule of the product. To adjust these simply tick or untick the tick box options or change the figure in the length options and click apply.



Other Notes

These components are for design intent only and the data contained within should be treated as such. Please contact the manufacturer for more details and product literature.

You can add this component to your company template file, they will then be available without loading when starting a new project.

Revisions

Version 1.0 - First Issue



space
SHADE

We are here to help

Tel +44 (0)117 958 9933

Fax +44 (0)117 958 9936

Email sales@kensingtonsystems.co.uk

www.kensingtonsystems.co.uk

Specification clauses

Please contact our sales team for full specification details